

Tol. posn. robov/Tol. for broken edges		Tol. posn. robov/Tol. for broken edges		Tol. posn. robov/Tol. for broken edges		Tol. posn. robov/Tol. for broken edges		Tol. posn. robov/Tol. for broken edges	
od/over	do/fo	od/over	do/fo	od/over	do/fo	od/over	do/fo	od/over	do/fo
3	6	3	6	3	6	3	6	3	6
mm	(μ m)	mm	(μ m)	mm	(μ m)	mm	(μ m)	mm	(μ m)
0.2	0.5	0.2	0.5	0.2	0.5	0.2	0.5	0.2	0.5
1	1	1	1	1	1	1	1	1	1

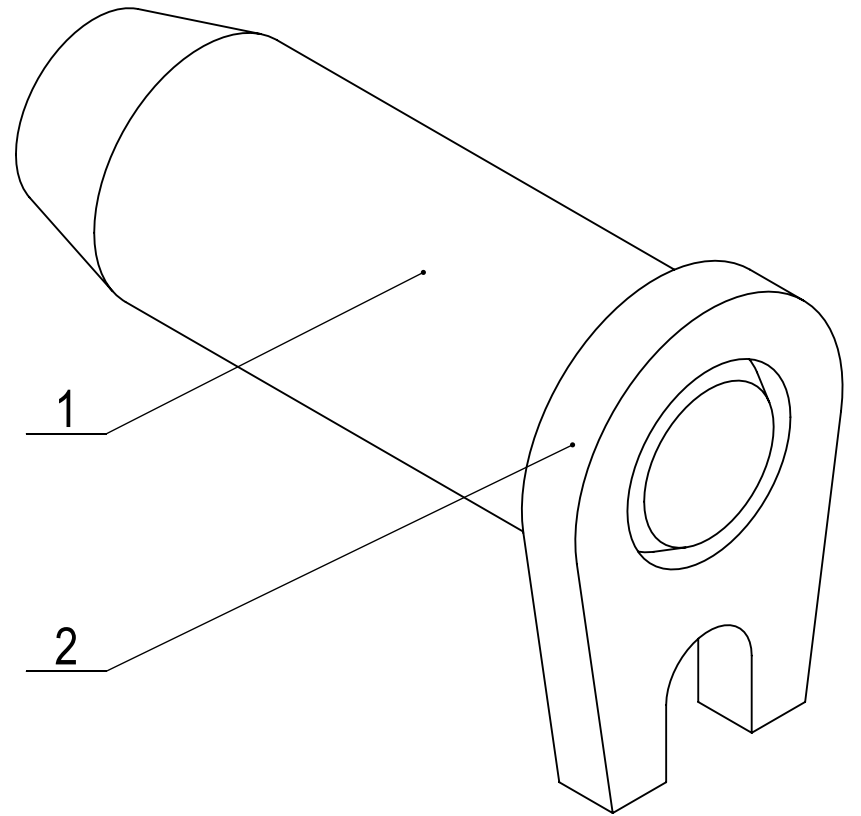
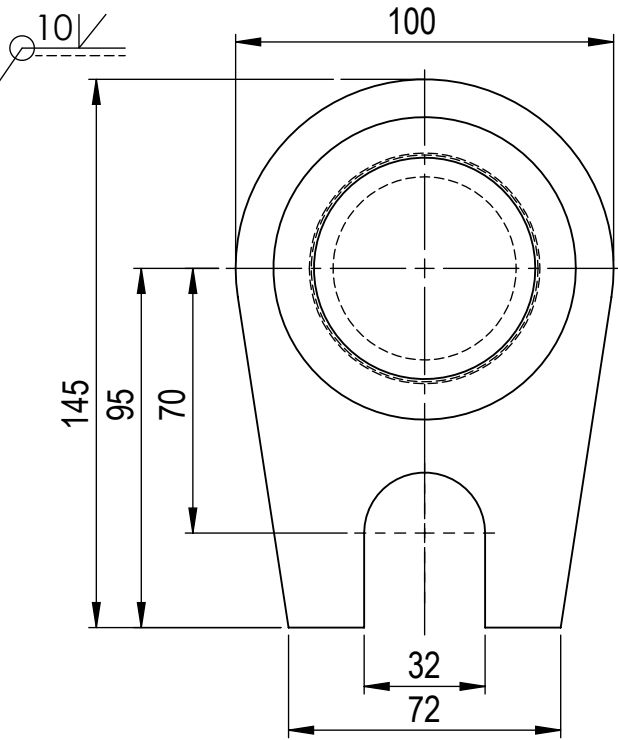
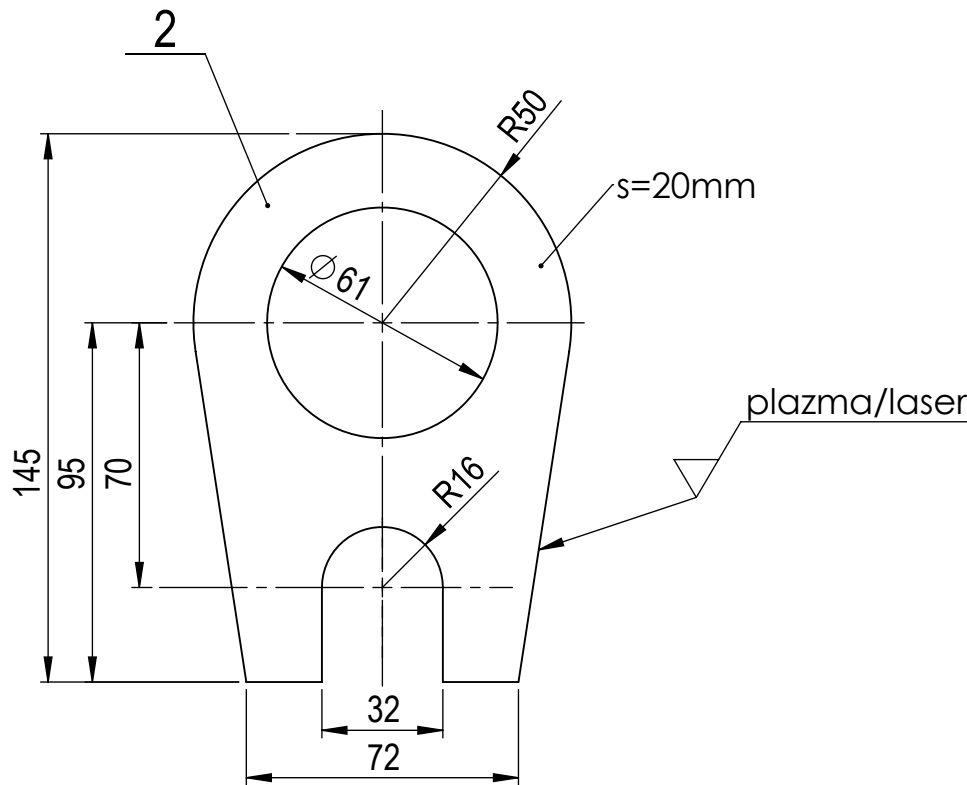
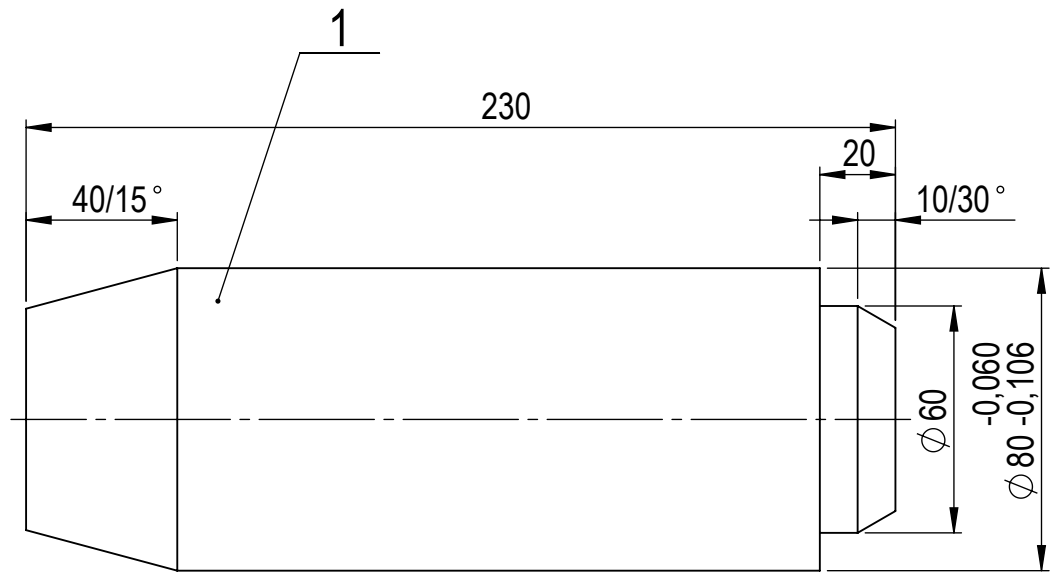
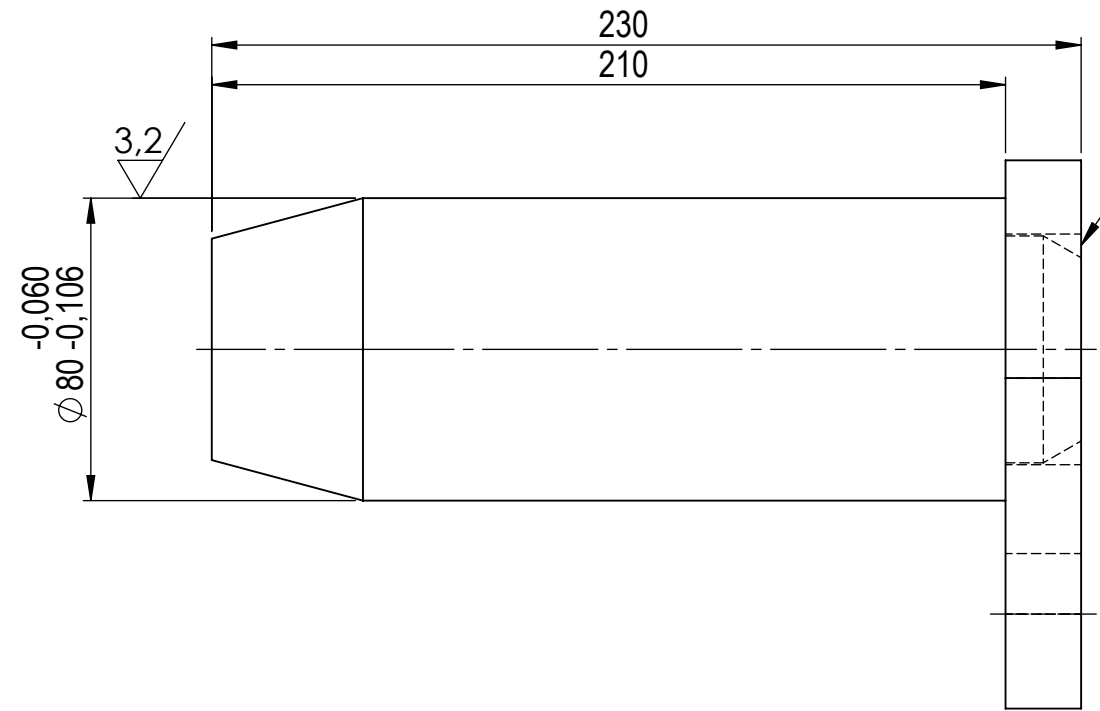
Tol. posn. robov/Tol. on straightness and flatness		Tol. posn. robov/Tol. on straightness and flatness		Tol. posn. robov/Tol. on straightness and flatness		Tol. posn. robov/Tol. on straightness and flatness	
od/over	do/fo	od/over	do/fo	od/over	do/fo	od/over	do/fo
3	6	3	6	3	6	3	6
mm	(μ m)	mm	(μ m)	mm	(μ m)	mm	(μ m)
0.2	0.5	0.2	0.5	0.2	0.5	0.2	0.5
1	1	1	1	1	1	1	1

Tol. dož. mer. razen za posn. robove/Tol. of linear dim. except for broken edges		Tol. dož. mer. razen za posn. robove/Tol. of linear dim. except for broken edges		Tol. dož. mer. razen za posn. robove/Tol. of linear dim. except for broken edges		Tol. dož. mer. razen za posn. robove/Tol. of linear dim. except for broken edges	
od/over	do/fo	od/over	do/fo	od/over	do/fo	od/over	do/fo
0.5	3	0.5	3	0.5	3	0.5	3
mm	(μ m)	mm	(μ m)	mm	(μ m)	mm	(μ m)
0.1	0.1	0.1	0.1	0.1	0.1	0.1	0.1
1.2	2	1.2	2	1.2	2	1.2	2

Tolerance of angular dimensions		Tolerance of angular dimensions		Tolerance of angular dimensions		Tolerance of angular dimensions	
od/over	do/fo	od/over	do/fo	od/over	do/fo	od/over	do/fo
0.5	3	0.5	3	0.5	3	0.5	3
mm	(μ m)	mm	(μ m)	mm	(μ m)	mm	(μ m)
0.1	0.1	0.1	0.1	0.1	0.1	0.1	0.1
1.2	2	1.2	2	1.2	2	1.2	2

This drawing should not be copied, sold to any third party or used for any other purposes than agreed.

Tolerance of circular run-out		Tolerance of circular run-out		Tolerance of circular run-out		Tolerance of circular run-out	
od/over	do/fo	od/over	do/fo	od/over	do/fo	od/over	do/fo
0.2	0.5	0.2	0.5	0.2	0.5	0.2	0.5
mm	(μ m)	mm	(μ m)	mm	(μ m)	mm	(μ m)
1	1	1	1	1	1	1	1



OPOMBA:
-Za tehnično izdelovalne pogoje glej risbo št. 1133-000-001!

2	1	Pločevina		20x100x145	1133-400-000	S355J2+N	1.3	1.3
1	1	Jeklo OK		Ø 80/ Ø 60x230	1133-400-000	42CrMo4+QT	8.3	8.3
Poz.	Št. kosov	Ime	Pom. ime	Mere	Št. risbe	Material	Masa/kos	Σ Masa kg

Revizija		Datum		Opis		Podpis	
PIRNAR & SAVŠEK		inženirski biro		www.pimar-savsek.si		Spiring	
Izdelal Designed		Nov. 2021		J. Kreča		Naročnik Customer	
Pregledal Checked		Nov. 2021		J. Lukančič		Investitor Investor	
Potrdil Approved		Nov. 2021		G. Kisel		Ime/Name	
Format Dwg. format		Datum Date		Ime Name		Podpis Signature	
A3		Merilo/Scale		1 : 2		Datum tiska Print date	
				Status risbe/Dwg. status		Sprememba Revision	
				Za izvedbo		Št. risbe Dwg. No.	
						23.11.2021	
						1133-400-000	
						Stran Page	
						1	
						Strani Pages	
						1	